



Adaptable
busbar trunking
for virtually any
application

Mempower Al & Cu busbar trunking systems

Economical and reliable, Mempower has evolved into an unsurpassed range of busbar trunking systems able to adapt to virtually any installation. Thoroughly tested, they fully comply with IEC 60439-2, and range from 25-6300A with lighting, low, medium and low impedance power versions, together with a wide selection of accessories and tap-off units.

- Unique design provides a neat and attractive alternative to cable and other busbar brands
- Design ensures flexibility and ease of installation
- No need for cable trays and complicated terminations
- Convenient 3m lengths can simply be tapped-off as required
- Both Aluminium and Copper bars available
- One single riser eliminates need for expensive cable runs to each floor
- In addition to Mempower's standard features many other custom made applications can be made possible, please discuss your application with one of our engineers

The design is completely re-usable and can be easily assembled in any location in the minimum of time, while tapoff devices can be located at any required point.



Eaton Mempower LUX

Eaton's Mempower LUX range of lighting trunking is available in 25, 40 and 63A versions. Used mainly for overhead installation, it is suitable for all types of commercial lighting and is ideal for use in retail stores, offices and hotels due to its flexibility in creating specific lighting designs.

The aluminium-clad trunking is available in 4 pole and 6 pole configurations with tap-off positions every metre along a standard 3m length. Simple to install, with no requirement for bolting lengths together the range also incorporates a flexible joint for directional or height changes. The fused tap-off unit is phase interchangeable on site or at the factory and can be supplied with or without cable ready fitted. A straightforward and highly styled answer to all of your lighting needs.

- 25, 40 & 63A ratings
- 4 pole & 6 pole
- Low weight Aluminium housing
- IP41 or IP55 when joint covers are fitted
- 1m & 3m standard lengths
- Single phase interchangeable tap-off
- Choice of end feeds
- Flexible lengths and accessories

Eaton Mempower LP

Our low power range covers 40, 63, 80, 100 and 125A ratings. With its attractive appearance and suitability for wall, bench, overhead, or underfloor installation it provides the obvious solution for a wide variety of institutional and commercial applications. Supplied as standard in 1, 2 and 3m lengths and complemented with a selection of angles and intersections it allows the layout of an installation to be arranged as required. The five bar configuration incorporates separate neutral and earth conductors. This, along with tap-off outlets every third of a metre and a variety of tap-off units, ensures the most efficient and flexible solution available – ideally suited for offices, banks, computer centres and light industrial applications.

- 40, 63, 80, 100 & 125A ratings
- Low weight Aluminium housing
- IP4X ingress protection
- 5 Bar (internal 100% N)
- Standard 1, 2 & 3m lengths, special lengths also available between 200mm and 3000mm
- Tap-offs outlets every 333mm
- Wide selection of tap-off units fitted with MCBs or fuse links.

Eaton Mempower MP

Eaton's Mempower MP system is available in 125, 160, 250, 400, 630 and 800A versions. It is installed primarily in hotels, department stores, hospitals, offices and industrial installations. The MP range is often used for vertical risers or as a supply system for the LP range as an alternative to traditional methods. MP busbar trunking is a 5 bar 3-phase system with a separate full neutral and integral earth conductor thereby removing the necessity to depend on the busbar housing for continuity. Adaptable to virtually any design, changes in layout can be accommodated very easily, providing a well-proven solution for industries where flexibility and adaptability are essential.

- 125, 160, 250, 400, 630 and 800A ratings
- Low weight Aluminium housing
- 5 Bar (internal 100% N)
- Standard 1, 2 & 3m lengths, special lengths also available between 200mm and 3000mm
- Tap-offs outlets every 333mm
- IP4X or IP54 (option)
- Full range of accessories include flange units, elbows and tap-off units.
- Wide selection of tap-off units include MCB, MCCB and fuse links



Eaton Mempower XP low impedance

The XP system brings the design of low impedance, sandwich construction busbar trunking to a new superior level. The Mempower XP Trunking System is available in ratings from 500–6300A.

An easily assembled cassette type joint is provided for 500–6300A ratings.

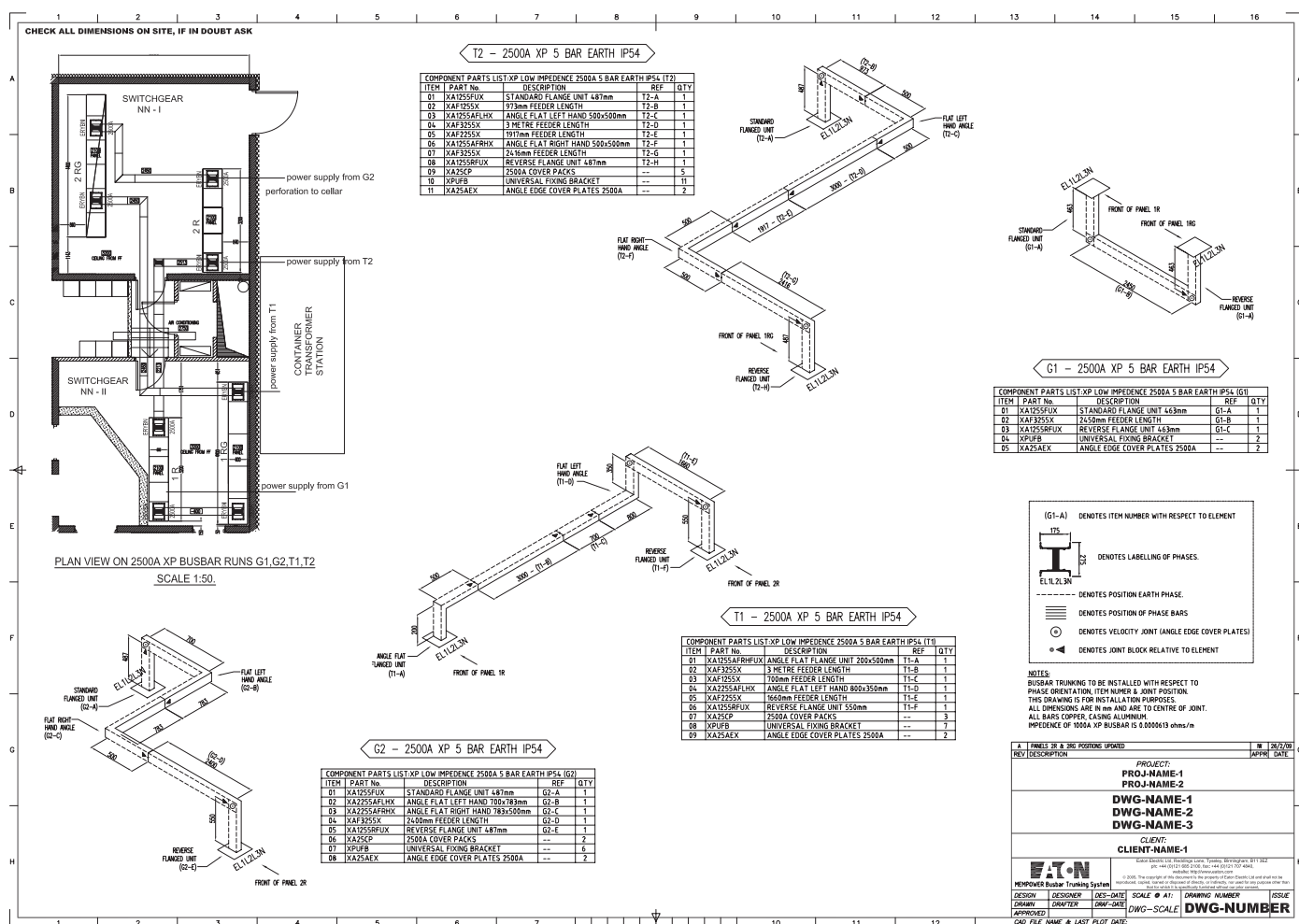
- Both Aluminium and Copper bars available
- 500 to 6300A ratings
- Standard 1, 2 & 3m lengths, special lengths also available between 200mm and 3000mm
- Full range of accessories include flange units, elbows and tap-off units
- IP4X or IP54 (option)
- Low weight Aluminium housing
- Shear bolt cassette joint for easy installation ensuring a low maintenance joint with visual indicator to confirm correct torque setting without the need for special tools
- No need for thermal expansion joints

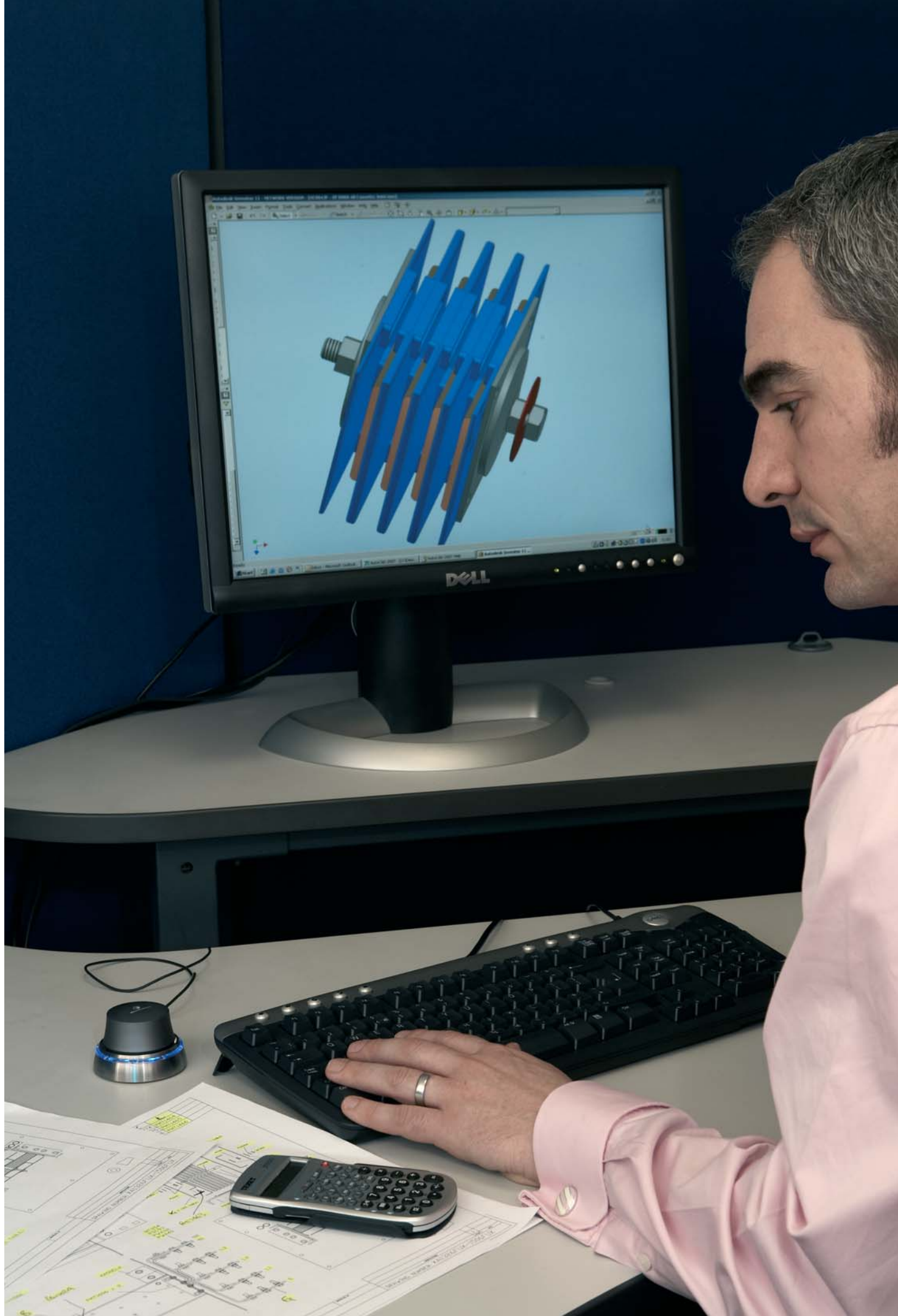
XP busbar configuration

- The make up of the product allows for varying configurations
- 3 Bar (Case PE)
- 4 Bar (Case PE)
- 5 Bar (Internal 100% earth)
- 5 Bar + 200% neutral (Case PE)
- 6 Bar includes 200% neutral & internal 100% earth
- High conductivity Aluminium and Copper busbars
- Aluminium busbars are nickel and tin plated along their entire length.
- Ingress protection IP4X to IP54 for indoor use.
- Class B 130°C Mylar wrapped Insulation
- Sandwich design throughout, feeder and plug-in sections
- Standard phasing from left to right E, L1, L2, L3, N1, N2

A photograph showing three men in a control room. Two men in the foreground, wearing blue shirts, are looking at a large display showing a technical diagram. A third man in a grey shirt is standing in the background, also looking at the display. The room has large windows and blue partitions.

- **Site measurement** – upon receipt of an order, an engineer will attend site to survey routes and discuss any technical detail or questions that you may have. This service normally applies to Rising Busbar Systems and complex lateral runs where special lengths or angles maybe necessary to complete the project.
- **Pricing and configuration** – Eaton's common pricing and configuration tool, "Bid manager", provides a standardised working practice to provide budget quotations in the face of the customer. Linked closely with the latest autocad based drawing packages, Eaton can prepare full working drawings to make any installation run smoothly.
- **Installation** – we have an experienced site installation team that will provide competitive pricing for your installation works. Alternatively, a full training program can be offered for installation techniques if required.
- **Commissioning** – as part of our site services we can also offer the services for testing and commissioning of installations.







Safety first with Mempower busbar trunking

Fire Barrier considerations

MP & XP trunking have been 3rd party tested and achieved a 240min fire integrity rating to clause 8.2.15 of IEC60439-2:2000, testing against ISO834.

MP Trunking is factory-fitted with internal fire-barriers, for when the trunking passes through walls or ceilings where fire integrity needs to be maintained. Eaton's internal fire barriers are of the intumescent gasket type giving a 4hr rated to BS476 Part 20.

MP trunking is fitted with interlocking Low Smoke Halogen Free covers, flammability grade UL94 V-O, for additional safety in not permitting toxic smoke in the event of fire.

XP trunking due to its sandwich configuration does not need an internal fire barrier.

Technical details

Conformity to standards

Eaton confirms the product ranges listed have been fully tested to the following clauses of the standard.

Low power trunking = all ratings

Medium power = all ratings

XP low impedance (500–3200A) = all clauses

XP low impedance (4000–6300A) = selected clauses

3rd Party Certification. To IEC 60439-2 2000+A1:2005 clauses:

Description	IEC 60439-2	Testing house
Temp rise	8.2.1	Kema
Dielectric properties	8.2.2	Kema
Short circuit strength	8.2.3	Kema
Effectiveness of protective circuit	8.2.4	Kema
Clearance and creepage distance	8.2.5	Kema
Mechanical operation	8.2.6	Not Applicable
Degree of protection	8.2.7	TUV
Magnetic field analysis (EMF)	Annex H	ERA
Resistance of insulating material to abnormal heat	8.2.9	Kema
Structural strength	8.2.10	Kema
Trolley-type tap-off	8.2.11	Not Applicable
Crushing resistance	8.2.12	Kema
Electrical characteristics	8.2.13	Kema
Flame propagation	8.2.14	Bre
Building penetration	8.2.15	Bre

Rating chart

Current rating	CSA dims WxD	Bar configuration	Ingress protection	Standard lengths	Tap-off face options	No. of tap-off positions per 3m
LUX – Lighting						
25	50 x 18mm	4 & 6	IP41 & IP55	1 & 3m	1 Face	3
40	50 x 18mm	4 & 6	IP41 & IP55	1 & 3m	1 Face	3
63	50 x 18mm	4	IP41 & IP55	1 & 3m	1 Face	3
LP – Low power						
40	80 x 31mm	5	IP4X	1, 2,& 3m ¹	1 Face	8
63	80 x 31mm	5	IP4X	1, 2,& 3m ¹	1 Face	8
80	80 x 31mm	5	IP4X	1, 2,& 3m ¹	1 Face	8
100	80 x 31mm	5	IP4X	1, 2,& 3m ¹	1 Face	8
125	80 x 31mm	5	IP4X	1, 2,& 3m ¹	1 Face	8
MP – Medium power						
125	142 x 48mm	5	IP4X & IP54	1, 2,& 3m ¹	1 Face	8
160	142 x 48mm	5	IP4X & IP54	1, 2,& 3m ¹	1 Face	8
250	142 x 48mm	5	IP4X & IP54	1, 2,& 3m ¹	1 Face	8
400	142 x 82mm	5	IP4X & IP54	1, 2,& 3m ¹	1 Face	8
630	142 x 82mm	5	IP4X & IP54	1, 2,& 3m ¹	1 Face	7
800	142 x 82mm	5	IP4X & IP54	1, 2,& 3m ¹	1 Face	6
Low impedance XP Copper						
500	175 x 125mm	3, 4, 5, 5N ² & 6	IP4X & IP54	1, 2,& 3m ¹	2 Face	1 to 8
800	175 x 125mm	3, 4, 5, 5N ² & 6	IP4X & IP54	1, 2,& 3m ¹	2 Face	1 to 8
1000	175 x 140mm	3, 4, 5, 5N ² & 6	IP4X & IP54	1, 2,& 3m ¹	2 Face	1 to 8
1250	175 x 155mm	3, 4, 5, 5N ² & 6	IP4X & IP54	1, 2,& 3m ¹	2 Face	1 to 8
1600	175 x 200mm	3, 4, 5, 5N ² & 6	IP4X & IP54	1, 2,& 3m ¹	2 Face	1 to 8
2000	175 x 235mm	3, 4, 5, 5N ² & 6	IP4X & IP54	1, 2,& 3m ¹	2 Face	1 to 8
2500	175 x 275mm	3, 4, 5, 5N ² & 6	IP4X & IP54	1, 2,& 3m ¹	2 Face	1 to 8
3200	175 x 340mm	3, 4, 5, 5N ² & 6	IP4X & IP54	1, 2,& 3m ¹	2 Face	1 to 8
4000	175 x 410mm	3, 4, 5, 5N ² & 6	IP4X & IP54	1, 2,& 3m ¹	2 Face	1 to 8
5000	175 x 490mm	3, 4, 5, 5N ² & 6	IP4X & IP54	1, 2,& 3m ¹	2 Face	1 to 8
6300	175 x 701mm	3, 4, 5, 5N ² & 6	IP4X & IP54	1, 2,& 3m ¹	2 Face	1 to 8
Low impedance XP Aluminium						
800	175 x 140mm	3, 4, 5, 5N ² & 6	IP4X & IP54	1, 2,& 3m ¹	2 Face	1 to 8
1000	175 x 170mm	3, 4, 5, 5N ² & 6	IP4X & IP54	1, 2,& 3m ¹	2 Face	1 to 8
1250	175 x 200mm	3, 4, 5, 5N ² & 6	IP4X & IP54	1, 2,& 3m ¹	2 Face	1 to 8
1600	175 x 235mm	3, 4, 5, 5N ² & 6	IP4X & IP54	1, 2,& 3m ¹	2 Face	1 to 8
2000	175 x 275mm	3, 4, 5, 5N ² & 6	IP4X & IP54	1, 2,& 3m ¹	2 Face	1 to 8
2500	175 x 340mm	3, 4, 5, 5N ² & 6	IP4X & IP54	1, 2,& 3m ¹	2 Face	1 to 8
3200	175 x 410mm	3, 4, 5, 5N ² & 6	IP4X & IP54	1, 2,& 3m ¹	2 Face	1 to 8
4000	175 x 490mm	3, 4, 5, 5N ² & 6	IP4X & IP54	1, 2,& 3m ¹	2 Face	1 to 8

¹Site specific lengths from 200mm upto 3000mm are available

²5Bar 200% Neutral

Eaton Corporation is a diversified power management company ranked among the largest Fortune 500 companies. Eaton is a global technology leader in electrical components and systems for power quality, distribution and control; hydraulics components, systems and services for industrial and mobile equipment; aerospace fuel, hydraulics and pneumatic systems for commercial and military use; and truck and automotive drivetrain and powertrain systems for performance, fuel economy and safety. For more information, visit www.eaton.com.

Eaton's electrical business is a global leader in power distribution, power quality, control and industrial automation products and services. Eaton's global electrical product lines, including Cutler-Hammer®, Moeller®, Powerware®, Holec®, MEM®, Santak®, and MGE Office Protection Systems™ provide customer-driven PowerChain Management® solutions to serve the power system needs of the data center, industrial, institutional, government, utility, commercial, residential, and OEM markets worldwide.

PowerChain Management solutions help enterprises achieve sustainability and a competitive advantage through proactive management of the power system as a strategic, integrated asset throughout its life cycle. With Eaton's distribution, control and automation and power quality equipment; full-scale engineering services; and information management systems, the power system is positioned to deliver powerful results: greater reliability, operating cost efficiencies, effective use of capital, enhanced safety, and risk mitigation.

Eaton Electric Limited

Reddings Lane
Birmingham B11 3EZ
United Kingdom
Customer Support Centre
Tel: +44(0) 8700 545 333
Fax: +44(0) 8700 540 333
Quotation support:
systemquoteseeee@eaton.com
Order support: uksystorders@eaton.com

Eaton Electric BV

PO Box 23
7550 AA Hengelo
The Netherlands
Customer contact
Tel.: +31 (0)74 246 4010
Fax: +31 (0)74 246 4445
Email: holec-info@eaton.com

Eaton's Electrical Sector

Moeller GmbH
Hein-Moeller-Straße 7-11
53115 Bonn
Germany



Powering Business Worldwide

© 2009 Eaton Corporation
All Rights Reserved
Printed in UK
Form No. BR01701001U
March 2009



PowerChain
Management®

PowerChain Management is a registered trademark of Eaton Corporation.

All other trademarks are property of their respective owners.