

HENSEL

PASSION FOR POWER.

The New Cable Junction Boxes

**The evolution
of the original.**

Level 1 - for outdoor installation.



1931



2014

ENYCASE[®]

www.enycase.de

The Hensel Cable Junction Box: A success story!

Since its founding, Gustav Hensel GmbH und Co. KG has continuously met the challenges of the times! The invention of the first cable junction box made of thermoset plastics in 1931 revolutionised an entire generation's everyday work routine: A multitude of installation tasks could be solved in a most simple method. A convenience that has become indispensable by now and the start of an unprecedented success story.

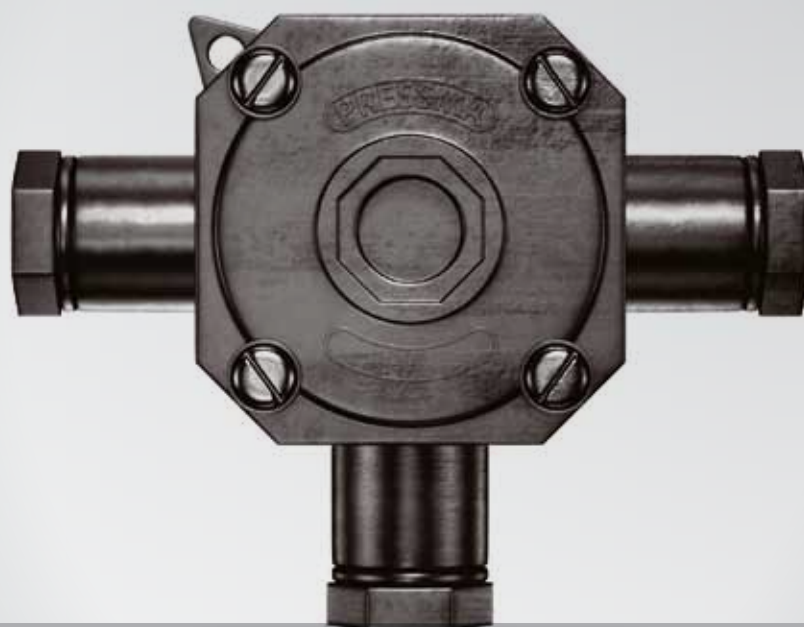
At eye level with progress.

As the inventor of the plastic cable junction box, we believe it is our obligation to always keep pace with the latest trends. It is not enough for us to react to new problems to be solved. Rather, we set the pace ourselves when innovations in the field of electrical engineering and installation are concerned.



We develop products that not only meet today's requirements but even surpass them...

1931



The evolution of the original: ENYCASE®

We have raised the original to the next level of evolution, followed up on impulses from practical experience and rendered them in the form of new features in the ENYCASE cable junction boxes. They are the embodiment of our very own competency because our know-how flourishes particularly in demanding settings, under difficult conditions, in industry and trade.

The series of innovative and high-quality junction boxes made of state-of-the-art materials are manufactured by means of pioneering production procedures. Our products have made their case for many generations. It is our claim to always continue the development and optimise our original for you.



Eight enclosure sizes in grey and black.

2014



Level 1: When it really matters!

Especially when conditions are rough and difficult, it is good to know that you can rely on the original. It is within the nature of our innate core competency to ensure safety particularly in demanding settings! Since it is especially outdoors, in wind and weather, where only products of outstanding quality make the difference.

With the experience from more than 80 years as the leading manufacturer of electrical installation and distribution systems and the passion for perfection, we have succeeded in optimising the ENYCASE cable junction box in such a way that it offers even better protection from moisture, dirt and dust.

Extra high degree of protection for unprotected outdoor installation according to DIN VDE 0100 Part 737.



**Level 1:
For outdoor
installation**



The evolution of the original continues.
Count on more to come!



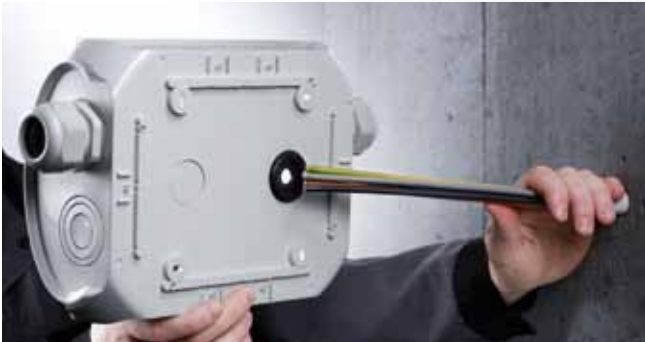
Robust shape with lots of space for wiring



Closes quickly by a quarter turn – closed position is visible



Multi-level knockouts for cable glands in different sizes



Cable entry also possible from the rear side



Burning behaviour in glow wire test 960°C
High impact withstand IK 09 (10 joule)

A firework of innovation!

New requirements arise from new challenges. To improve the ENYCASE even further, we have once more revisited and checked each detail. This is the only way to be sure that the most up-to-date product is manufactured, which not only enthralls its users for what is already tried and proven but specifically always for its novelties.

- Tested product solutions from the market leader
- Safe products with a long useful life
- Innovative applications with many installation advantages

All terminals with 2 clamping units per pole



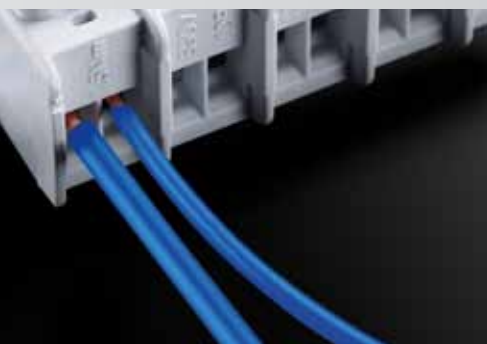
Terminals prevent damage of conductors, also for flexible conductors without ferrule



Different terminal positions and fastening options



Various conductor cross sections and conductor types



High-position terminals with more space for wiring



External brackets for fastening are always included



Reference table: Cable junction boxes “weatherproof” old-new



Model	Present types	New types	Price in €
1.5-2.5 mm ²	KF 9025	KF 0202 G	8.55
		KF 0402 G	11.40
1.5-4 mm ²	KF 9045	KF 0404 G	11.60
		KF 0604 G	16.70
2.5-6 mm ²	KF 9065	KF 0606 G	18.40
		KF 1006 G	23.00
4-10 mm ²	KF 9105	KF 1010 G	25.30
		KF 1610 G	33.90
6-16 mm ²		KF 1616 G	38.60
10-25 mm ²	KF 9255	KF 2525 G	46.90
16-35 mm ²	KF 9355	KF 3535 G	71.80
16-50 mm ²	KF 9505	KF 5050 G	135.10
without terminal	KF 9020	KF 0200 G	7.25
without terminal	KF 9040	KF 0400 G	10.20
without terminal	KF 9060	KF 0600 G	15.10
without terminal	KF 9100	KF 1000 G	19.70
without terminal		KF 1600 G	28.10
without terminal	KF 9250	KF 2500 G	36.40
without terminal	KF 9350	KF 3500 G	43.90
without terminal	KF 9500	KF 5000 G	87.30
1.5-2.5 mm ²	KF 5025	KF 0202 B	8.55
	KD 5025		
	KD 5125		
1.5-4 mm ²	KF 5045	KF 0404 B	11.60
	KD5045		
2.5-6 mm ²	KF 5105	KF 0606 B	18.40
	KD 5105		
4-10 mm ²	KF 5105	KF 1010 B	25.30
	KD 5105		
6-16 mm ²		KF 1616 B	39.00
10-25 mm ²	KF 5255	KF 2525 B	46.90
	KD 5255		
16-35 mm ²	KF 5355	KF 3535 B	71.80
	KD 5355		
16-50 mm ²	KF 5505	KF 5050 B	135.10
without terminal	KF 5020	KF 0200 B	7.25
	KD 5020		
	KD 5120		
without terminal	KF 5040	KF 0400 B	10.20
	KD5040		
without terminal	KF 5060	KF 0600 B	15.10
	KD 5060		
without terminal	KF 5100	KF 1000 B	19.70
	KD 5100		



Model	present types	new types	Price in €
without terminal	New	KF 1600 B	28.10
without terminal	KF 5250 KD 5250	KF 2500 B	36.40
without terminal	KF 5350 KD 5350	KF 3500 B	43.90
without terminal	KF 5500	KF 5000 B	87.30
without knockouts	KF 8020	KF 0200 H	7.25
without knockouts	KF 8040	KF 0400 H	10.20
without knockouts	KF 8060	KF 0600 H	15.10
without knockouts	KF 8100	KF 1000 H	19.70
without knockouts		KF 1600 H	28.10
without knockouts	KF 8250	KF 2500 H	36.40
without knockouts	KF 8350	KF 3500 H	43.90
without knockouts	KF 8500	KF 5000 H	87.30
without knockouts	KF 4020 KD 4020 KD 4120	KF 0200 C	7.25
without knockouts	KF 4040 KD 4040	KF 0400 C	10.20
without knockouts	KF 4060 KD 4060	KF 0600 C	15.10
without knockouts	KF 4100 KD 4100	KF 1000 C	19.70
without knockouts		KF 1600 C	28.10
without knockouts	KF 4250 KD 4250	KF 2500 C	36.40
without knockouts	KF 4350 KD 4350	KF 3500 C	43.90
without knockouts	KF 4500	KF 5000 C	87.30



Gustav Hensel GmbH & Co. KG
Gustav-Hensel-Str. 6
D-57368 Lennestadt, Germany
Telephone: +49 (0) 27 23-609-0
Fax: +49 (0) 27 23-600-52

Email: info@hensel-electric.de
www.hensel-electric.de

98 17 0873 3.14/5/11



PREMIUM | **MARKEN**
Partner

